



SDU
TELECOMS

Your Trusted Contractor

www.sdutelecoms.com

INDEX

- About us
- Culture & Values
- Services
 - Civil Engineering
 - Streetworks Permitting
 - Traffic Management
 - Fibre Optic Cabling
 - MDU & SDU
 - Splicing
 - Maintenance & Reparatons
 - Wayleaves & Additional Services
- Why Us
- Current Customers
- Customer Feedbacks
- Portfolio



“Helping to keep UK connected”

SDU & Telecoms Empowering the UK Telecoms



About Us

We excel in offering customized, superior-quality utility construction programs, specifically designed to meet the distinct requirements of the Power and telecommunications sectors. Its steadfast commitment to customer satisfaction, combined with its provision of efficient, safe, and quality-centric services, cements SDU Telecoms as a dependable ally in the UK's civil and telecom infrastructure arena.



Catalin Felecan, the driving force behind Safe Dig Utilities and Telecoms (SDU Telecoms), boasts over 20 years of unparalleled expertise in the telecom industry, with a specialized focus on FTTx fibre technology. Since its inception in 2017, SDU Telecoms, under Felecan's guidance, has rapidly emerged as a leading infrastructure services provider across the UK, celebrated for its dedication to innovation, safety, and quality. Felecan's commitment to surpassing client expectations and his capacity to galvanize a highly skilled team that embodies his principles have been crucial in establishing SDU Telecoms' exceptional standing in the industry.



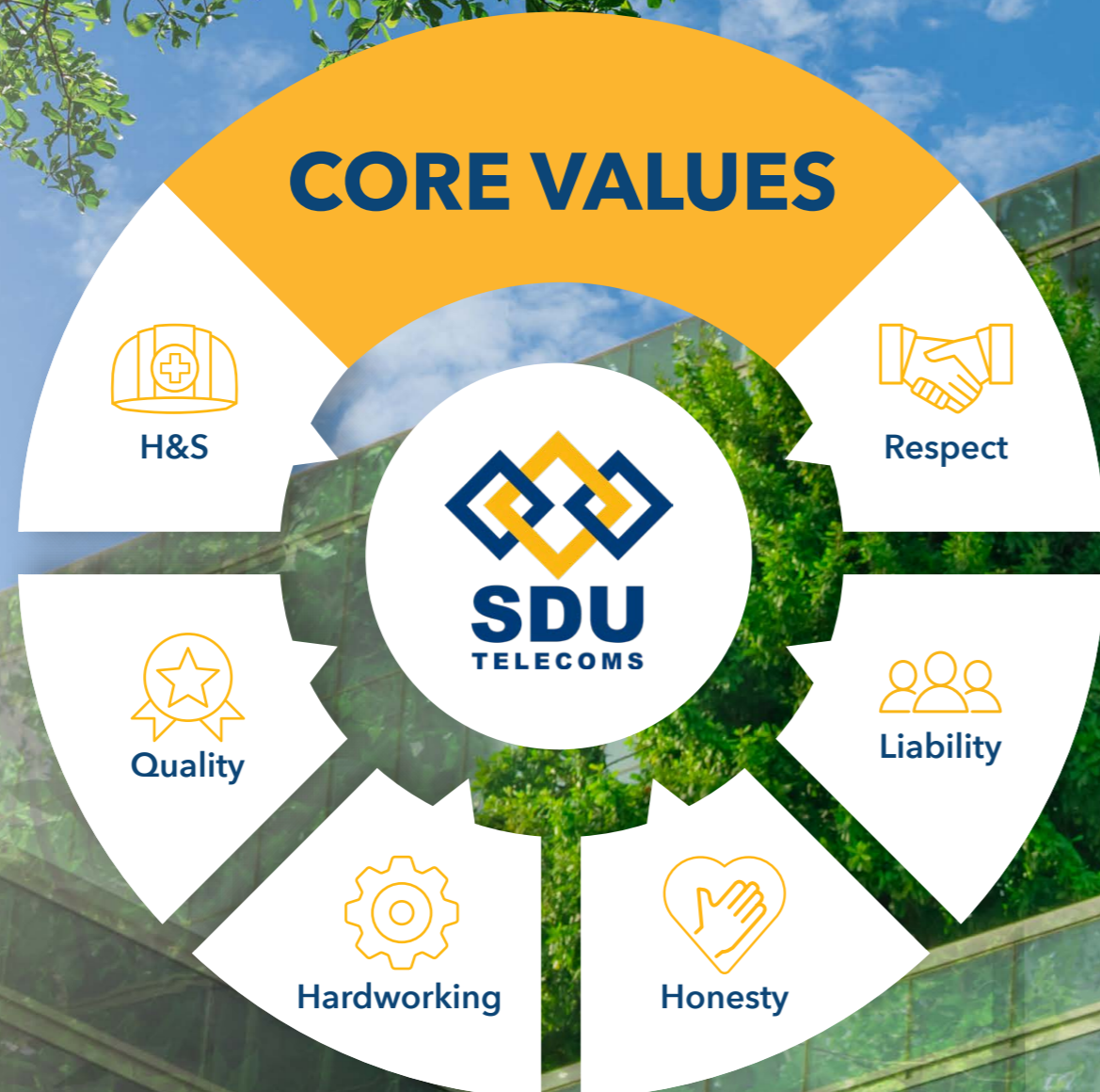
Meet our Team



More About Us

Our success stems from our vibrant workplace culture, where we see ourselves as more than a team...

we're a family!



Women's Day



Employee of the Month



Christmas Day



Pizza Day



Donations



Birthdays



AND MORE...

SERVICES



**Civil
Engineering**



**Traffic
Management**



MDU & SDU



Maintenance



Wayleaves



**Streetworks
Perminting**



**Fibre Optic
Cabling**



Splicing



Call Outs



**Additional
Services**



Civil Engineering



We are experts on...

- Telecoms Infrastructure
- Power Infrastructure
- PIA
- Moling
- Pole Installation
- EV Charges



Telecoms Infrastructure

Lead the way in telecommunications with our specialized Telecom Infrastructure Civil Engineering services, where expertise meets efficiency.

 Locating and Clearing Duct Blockages	 Duct Laying	 Frame & Covers	 Directional Drilling
 Trenching	 Service Box & Vault Placement	 Conduit Placement & Proofing	 Cabinets Installation
 Pole Setting & Support Structures	 Manhole	 Slewing	 Tarmac & Reinstatement

















Power Infrastructure



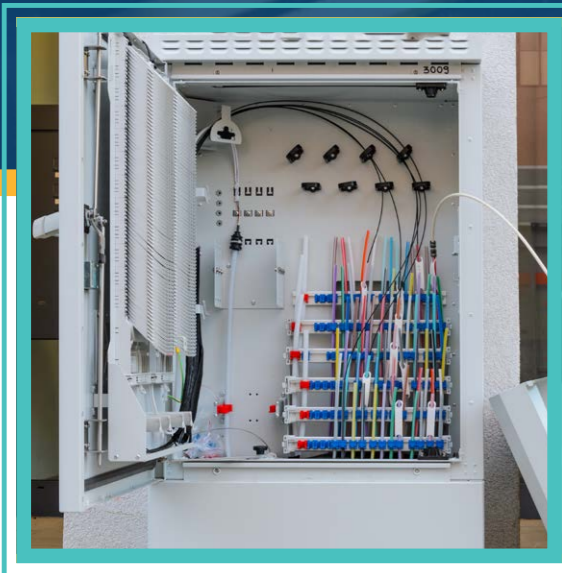
Fuel growth with us, your partners in Civil Engineering offering tailored solutions for robust energy infrastructure.

 <p>Locating and Clearing Duct Blockages</p>	 <p>Duct laying</p>	 <p>Frame & Covers</p>	 <p>Directional Drilling</p>
 <p>Trenching</p>	 <p>Service Box & Vault Placement</p>	 <p>Conduit Placement & Proofing</p>	 <p>Cabinets Installation</p>
 <p>Pole Setting & Support Structures</p>	 <p>Manhole</p>	 <p>Handholes</p>	 <p>Pull Boxes</p>

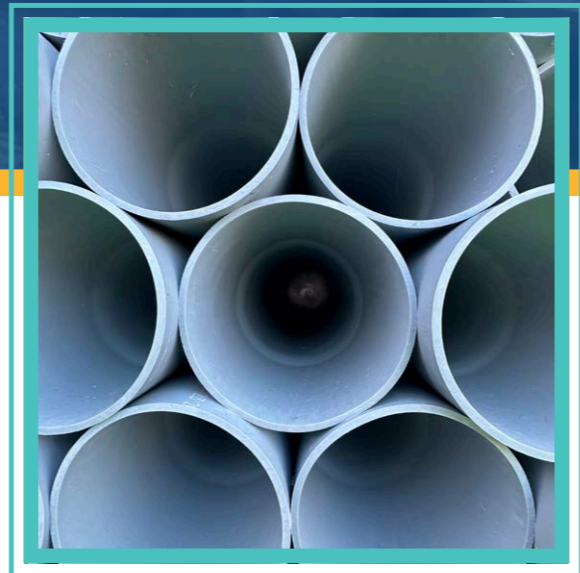
EV CHARGES



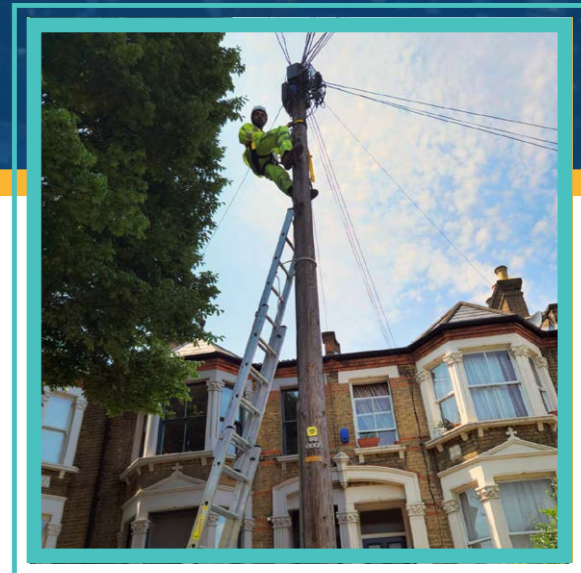
PIA Installation and Testing



Moling



Pole Installation



WHY US?

We are more than a supplier,
We are experts!

We can build **over 600 jobs per week!**



+350,000

Task Done



+200,000m

Meters Digged



+180,000

Blockages Cleared



+80,000

Frames & Cover



+20,000

Tarmac Jobs



PARTNER SKILLS





Streetworks Permitting

We are experts on...

 Streetworks Permit Application	 Bus suspension	 Lane closure	 Switch outs
 Land Searches	 Highways Permits	 Temporary road closures	 Complex street closures
 Parking bay suspension	 Emergency or urgent works	 Defect Management	 Remedial Coordination
 Re-activation of issuing a road closure	 Re-activation of an existing permit	 Amend an existing Traffic Regulation Order	 Arrange re-advertising of a Traffic Regulation

WHY US?

Traffic Management Plans
& Setup Availability



Street Work
Manager experts



Highly Experienced



High volume
of applications

Quick &
Effective



Experience
+290k
Permits Granted

Specialized Software of
Management & Reporting

Capability
+700
Permits/week



Traffic Management

We are experts on...



2 way or Multi Phase
Temporary Traffic Lights



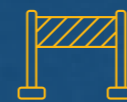
Pedestrian
Phase Signals



Stop & Go Remote or
Operative Controlled



Signs, Barriers, Cones...
Any Chapter 8 Requirements



Lane Closures



Road Closure / Diversions



Convoy Operations /
Contra Flows



Priority Systems



Design consultation



Traffic Management
CAD Drawings



Sign Shop (Advanced
Warning Signs / Specials)



VMS
(Variable Message Signs)

WHY CHOOSE US FOR TM



+9 Years Experience

+15,000 CAD Drawings

+15,000 Sites Set up

+1,800 Road Closed

+60 CAD Drawings / week

3 Reasons to Choose us:

Management of
High Volume!

Fast Response!

Premium Services!

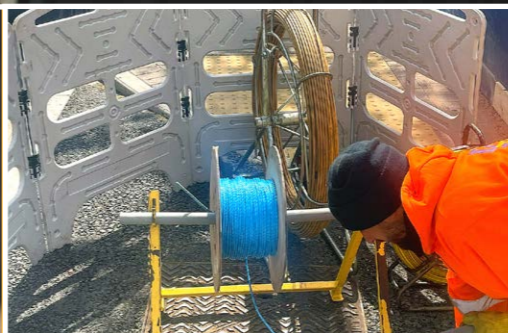


Fibre Optic Cabling

We are experts on...



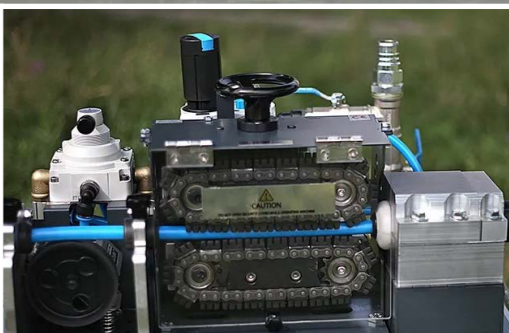
Surveying



Roping



Subducting



Blowing



Cabling



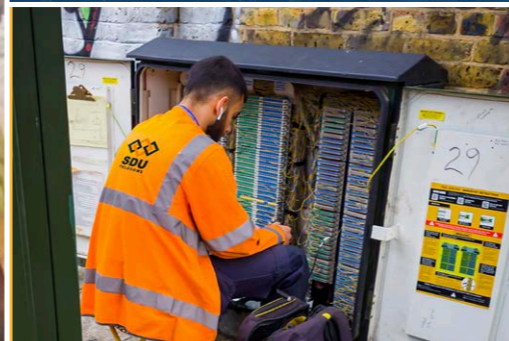
Labelling



Overhead



Physical Infrastructure Access (PIA)



Last mile installation



Customer installation



OTDR Testing



Cabinet installation

Capability



Experience

271,000
THPs per month



20

**PON & Spines build
per month**

12

**Turn Key Projects
on Parallel**



+200,000
THPs Delivered

335,000
Civils Done

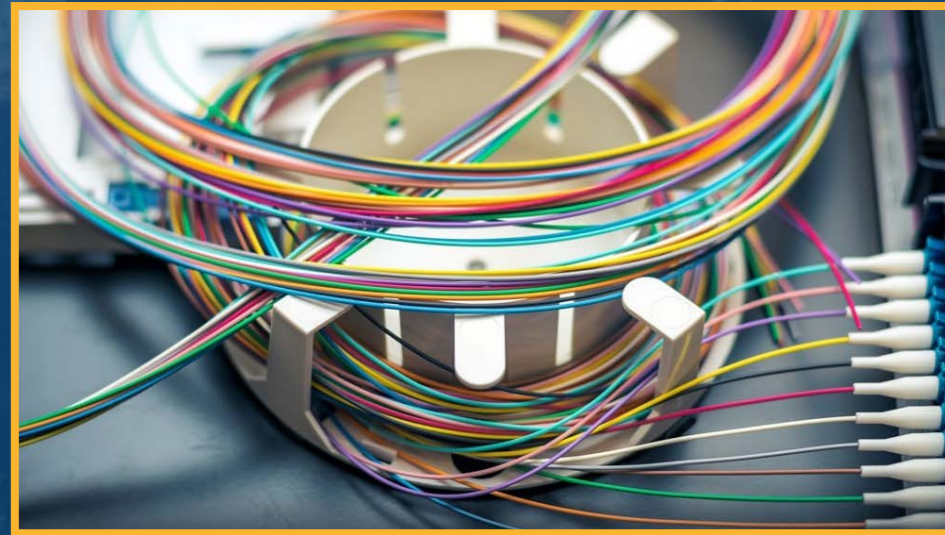


275

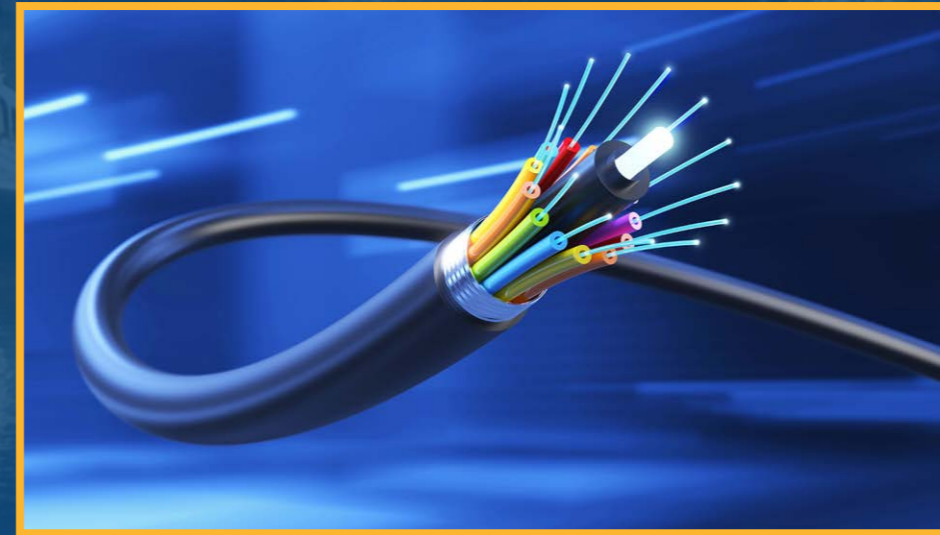
PONS & Spines Build

WHY US?

Because we are using **the best Technology**



Ribbon Fibre



Cof Fibre

PARTNER SKILLS

A grid of partner logos on a teal background with faint business diagrams. The logos include: monday.com, Trello, iAuditor by SafetyCulture, Project, depotnet software - ready for service, FireWire, SafeContractor Alcumus, Jira Software, Office 365, SUMITOMO ELECTRIC, and FLUKE.

monday.com

Trello

iAuditor
by SafetyCulture

Project

depotnet
software - ready for service

FireWire

SafeContractor
Alcumus

Jira Software

Office 365

SUMITOMO
ELECTRIC

FLUKE



Working Safe



Qualified Team



Higher Quality



Effective



Quick



MDU & SDU

Connecting individual or multiple residential and business units can present a significant challenge. With us, you don't need to worry about the how—because that's exactly what we're here for.

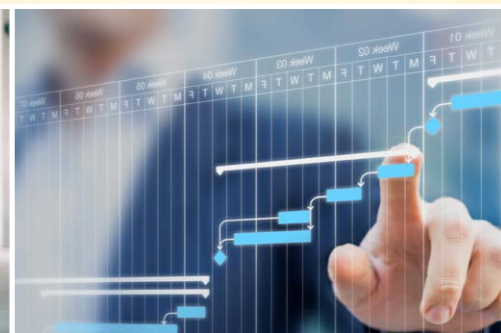
Services we offer:



Planning, Design & Surveying



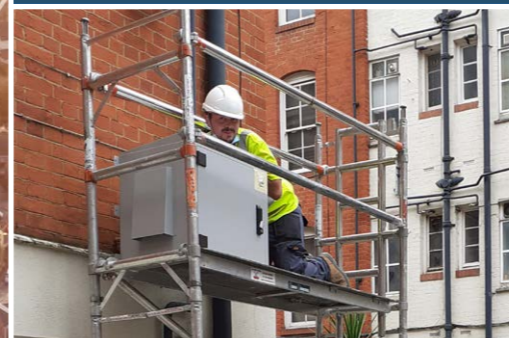
Retro Builds & New builds



Resident Schedule installation & communication



Testing



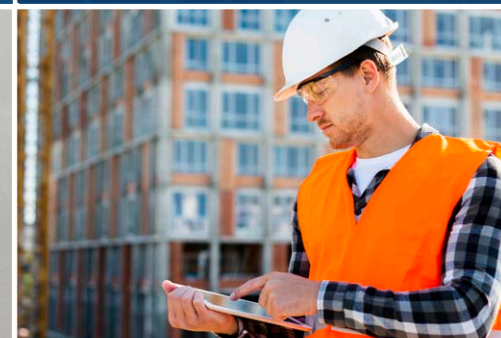
External Installations



Cabinets & FDPs



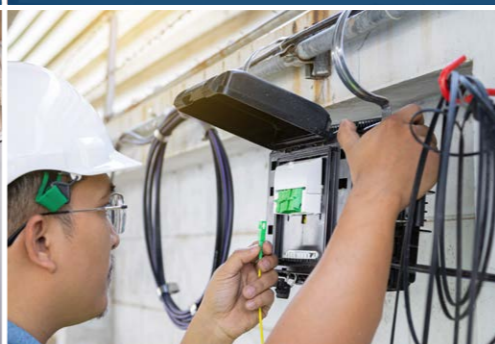
Fire Stopping Surveying, Sealing & Certification



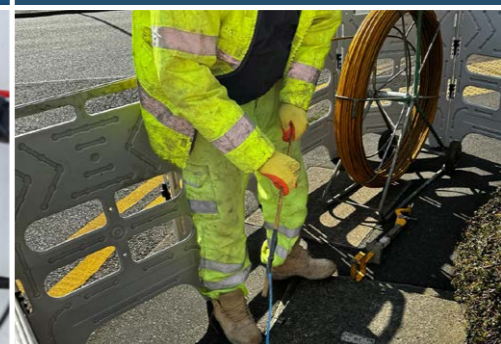
Asbestos Surveying



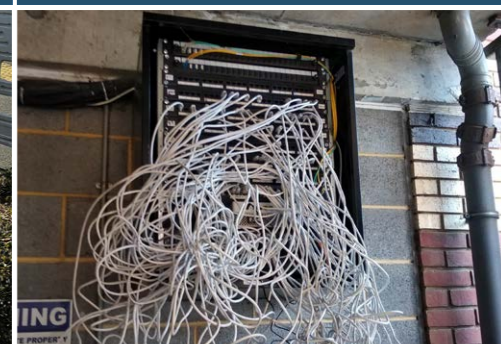
Containments Installation



PIA



TRR



Call Outs & Maintenance

EXPERTS ON...

LET'S US DESIGN IT, WE WILL FIND THE BEST ROUTES



InvisiLight Fibre

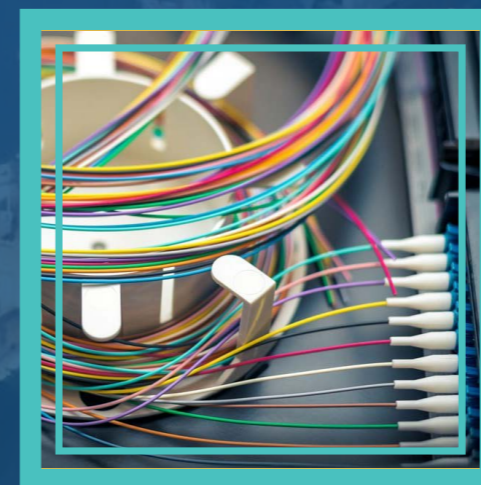
FTTP & FTTH



GPon Fibre



Ribbon Fibre



Externals & Installations at height

Cat 5 & 6 Networks



OUR EXPERIENCE MAKES THE DIFFERENCE!

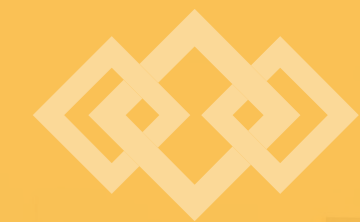


ALSO BRILLIANT INSTALLING...

- Hatches
- Galv Steel Tray
- Galv trunking
- PVC trunking
- Catenary Wire
- Overhead
- Solid UPVC conduit
- Flexible UPVC and UPVC coated steel conduit
- Cabinets deployment
- Installing equipment into DP



WE CERTIFICATE OUR FIRE STOPPING INSTALLATIONS





+ We prepare the Pathway for Fibre Installation

Trenching | Thrusting | Grass reinstatement | Concrete reinstatement | Asphalt reinstatement | Right Of Way (ROW)

SDU What we do

- ✓ Creating a pathway for the ducting system into the house
- ✓ Blowing Fibre from cabinet to the premises
- ✓ Splicing & Jointing the fibre
- ✓ Indoor installation of ONT at the customer premises
- ✓ Provisioning the customer onto the UFB network



Fibre Installation Methods



Aerial cable

Underground pipe



Mounted on a fence, driveway edge, or retaining wall

Buried cable under a driveway or path



Buried cable in a grass verge or garden

WHY US?

We offer a **Turnkey Solution** with a high volumen delivery capability



+20 Years Experience



+7,500 THP Design/Month

Effective

Quick

Higher Quality

Safe

Qualified Team



+5,000 THP Build/Month



LET US MAKE YOUR PROJECTS MORE EFFICIENTLY



PARTNER SKILLS

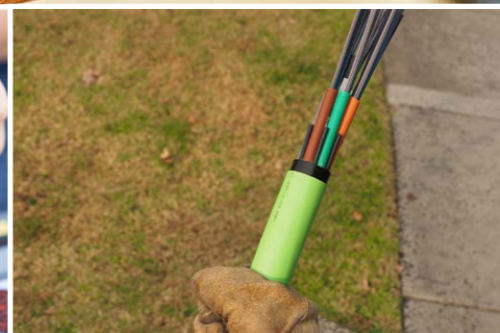


Fibre Fusion Splicing & Testing Services

We are experts on...



Single Fusion Splicing



Ribbon Fusion Splicing



Nodes & Clusters Integration



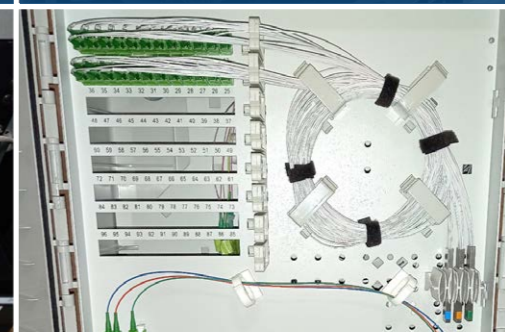
Single-Mode & Multi-Mode



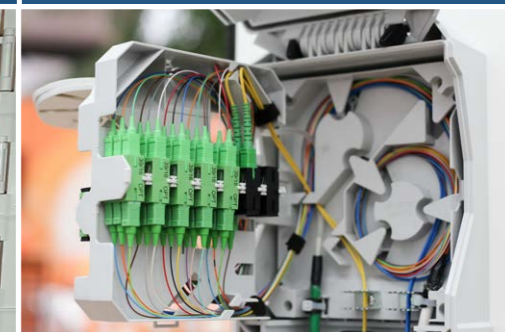
Point Of Enter (POE) Splicing



OLT Connection Splicing



Optical Splitter Splicing



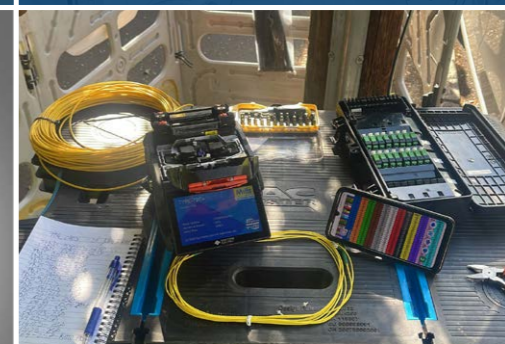
Splice Box Integration



Pole splicing



Network Repairs & Extensions



Network Redesign & Reconfigurations



Fiber Optic Testing & Troubleshooting

WHY CHOOSE OUR SERVICES?



01

Expertise

Our team consists of skilled professionals with certifications and extensive experience in the most advanced fibre optic splicing techniques, guaranteeing superior network performance.

02

Precision

We recognize the critical impact of even minor flaws on your network's functionality. Our meticulous approach to splicing guarantees accuracy in every job.

03

Advanced Technology

Our commitment to excellence is reflected in our investment in the latest fiber optic splicing tools and technology, ensuring top-tier results for your network

04

Dependability

Rely on us for consistent, high-quality fiber optic splicing that enhances signal integrity and optimizes the efficiency of data transmission.

05

Tailored Solutions

Recognizing the distinctiveness of each project, we customize our services to address your particular requirements, from minor repairs to extensive installations.

+15 Dedicated Teams

+20,000 Month Delivery

+300,000 Splice Delivered

+1,000,000 Tested

PARTNER SKILLS





Maintenance & Call Outs

Maintenance

24H Call Outs

SDU Telecoms "Ensuring Reliability and Performance Through Expert Maintenance"

At SDU Telecoms, we understand that the backbone of effective telecommunications and power infrastructure lies not just in cutting-edge installations but in diligent, ongoing maintenance. Our dedicated maintenance services are designed to ensure your infrastructure remains reliable, efficient, and optimized for performance.

Maintenance Services:



Why Choose SDU Telecoms for Maintenance?

- 01 Expertise and Experience
- 02 Comprehensive Service Coverage
- 03 Commitment to Safety & Quality
- 04 State-of-the-Art Tools & Techniques

Restoring Your Infrastructure to Peak Performance

In the dynamic realm of telecom and power infrastructure, the unexpected can happen. Our services are designed to quickly address damages, ensuring minimal downtime and restoring the integrity of your network with lasting solutions.

Reparation Services:



Why Choose SDU Telecoms for Call Outs?

- ★ Experienced Professionals
- ★ Advanced Technologies
- ★ Swift & Effective
- ★ Customised Solutions
- ★ Dedicated to Quality

Wayleaves & Other services



Wayleaves

Navigating the complexities of wayleaves is crucial for the successful deployment and maintenance of telecom and power infrastructure. Our expertise in securing wayleave agreements enables timely project delivery by ensuring access rights and permissions are correctly established and maintained.

Wayleaves Services:

- Negotiation and Agreement Acquisition
- Documentation and Legal Support
- Stakeholder Liaison
- Compliance and Regulation Advisory
- Project Management and Coordination

Why SDU Telecoms?

- Expert Negotiation Skills
- Legal & Regulatory Knowledge
- Strong Stakeholder Relationships
- Attention to Compliance and Detail
- Efficient Project Execution

Other Services

At SDU Telecoms, we understand the complexities and challenges of telecom and power infrastructure projects. Beyond our core services, we offer a suite of additional services designed to cover every aspect of project management, consultancy, and planning. From the initial survey to the final closure of notice actions, our team is equipped to support your project's success at every step.

Other Services:

Project
Management

Consultancy

Survey
& Planification

WHY SDU TELECOMS

Certifications

Spaces

Teams

Backoffice

Vehicles

Team Compliance

Partners Skills



Why Choose Us?



01

STRONG SAFETY AND COMPLIANCE

Our commitment to safety and adherence to industry standards and regulations ensures a secure working environment, reducing risks and potential liabilities.

02

EXPERTISE

We are an established company with a skilled team with extensive experience in building and maintaining reliable telecom infrastructure.

03

TIMELY PROJECT COMPLETION

We prioritize meeting deadlines, ensuring smooth project execution and minimal disruptions to clients' operations, leading to increased customer satisfaction.

04

CUSTOMER-CENTRIC APPROACH

We put the customer at the heart of our business, tailoring solutions to meet specific needs and providing ongoing support to ensure seamless communication and satisfaction.

05

COMMITMENT TO EXCELLENCE

As your telecom infrastructure contractor, I am dedicated to upholding the highest quality standards in the industry. I employ rigorous quality control measures and utilize only the finest materials and components, ensuring reliable and high-performance networks for your organisation.

06

COMPETITIVE PRICING

SDU TELECOMS offers cost-effective services without compromising on quality, delivering value for money and fostering long-term partnerships with clients.

THE HEADQUARTERS



500m²



30 Parking Spaces



Train Station
(Chafford Hundred)



90 Desks



3 Meeting Rooms



Facilities



Tesco Express

Chafford Hundred





NICE PLACE TO WORK



Traffic Management Illustrator

StreetWorks Coordinators

Administration Coordinators

Project Manager

Delivery Managers

H&S & Supervisors



THE YARD ON THE NORTH



HUNTS HILL FARM



25000m²



24/7 Security



CCTV



M25 Access



THE YARD ON THE SOUTH



5000 m²



24/7 Security



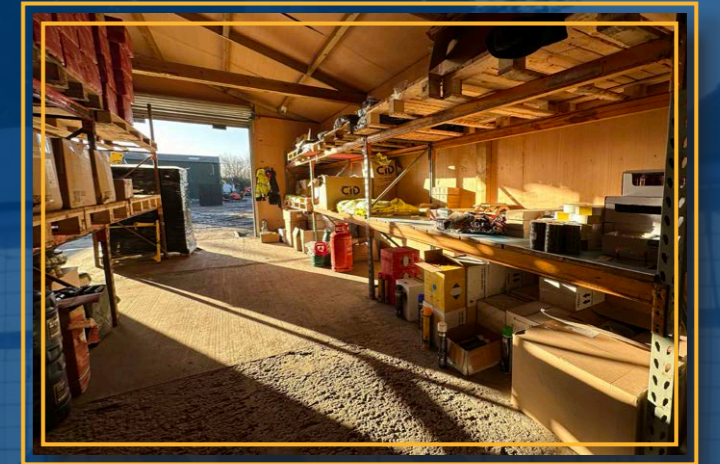
CCTV



M25 Access



AMPLE AMOUNT OF STORAGE



25.000m² Storage

| CCTV and Insured

| Fully TRR equipment

| Blowing Machines

| Splicers Machines

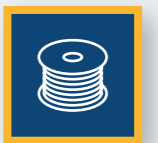
| Traffic Management



+60 Teams



Digging Teams



TRR (cabling)



Fibre blowing



Splicer Teams

+70 Vehicles



Grab Lorries



Mini Diggers



Cherry Picker



JCB Vehicles



Hot Box Vehicles



Support Vehicles



CERTIFICATIONS

Operative Acreditations

- All Operatives**
 Safe Dig Utilities Induction | MT003 | SA006 | Smart Awards
- Overhead Cabeling**
 SA001 (Overhead Safety) | S8 (Overhead Cable Installation)
- Underground Cabeling**
 SA002 (Underground Safety) | PIA S7 (Duct And Cable Installation) | SA010 (Medium Risk Confined Spaces)
- Civil operatives**
 Street Works | Duct Laying (Openreach) | Duct Blockages (Openreach) | Frame And Covers (Openreach) | Box Building (Openreach) | Core Drilling (Openreach) | SA004 (Abrasive Wheels) | SA007 (Asbestos Awareness) | SA010 (Medium Risk Confined Spaces) | PIA S7 (Duct And Cable Installation)

Partner Skills

Solo (Telent) | Optimus (MorrisonTS) | Zsmart (Hyperoptic) | Street manager apps | Council Portals | and much more...





Current Customers

"Your success is our priority"
(Catalin Felecan)

telent



MORRISON 
Telecom Services
A part of MGroupServices

G.Network
100% FIBRE CONNECTIVITY

trooli

ELECTRICAL
TESTING

CUSTOMER FEEDBACKS

"I have worked with SDU on multiple projects and their attention to detail and commitment to delivering high-quality work has always impressed me. Their team is knowledgeable and professional, and they are always willing to go the extra mile to ensure that projects are completed on time and to a high standard."

Project Manager at Hyperoptic



"SDU has been a valuable partner in our telecommunications infrastructure projects. Their experience and expertise in civil and permitting services have been instrumental in the success of our projects. Their team is responsive and reliable, and they always prioritize safety and compliance with regulations."

Construction Manager at Telent



"SDU has consistently delivered high-quality work in a timely manner, and their team is always willing to collaborate to ensure successful project completion."

**Director of Operations
at Morrison Telecom Services**



"SDU has been an important subcontractor in our efforts to provide full-fibre broadband to residents and businesses across London. Their dedication to quality and safety is evident in their work, and their team is knowledgeable and efficient. We have been impressed with their services and look forward to continuing to work with them."

Head of Operations at G.Network



"SDU has been an integral part of our civil work on multiple projects. Their team is knowledgeable and experienced, and they always prioritize safety and compliance with regulations. We have been impressed with their ability to quickly adapt to project changes and their commitment to delivering high-quality work."

Delivery Manager at Hyperoptic



"SDU Telecoms demonstrated exceptional capability and project management, completing a significant volume of work in a remarkably short time. Their commitment to quality and efficiency is evident, ensuring a reliable connection and seamless service."

Delivery Director at Trooli



SDUhero



SDU
TELECOMS

Portfolio



Project 1

hyperoptic

HyperZone: Peckham & Surrey Quays

Location: Peckham & Surrey Quays, London, UK

Building: Network Build Turnkey Solution

Spines: 5 | **PONs:** 52 | **THPs:** 38,365

Scope of Work:

Project Management | Surveying | Roping | TRR |
Subducting | Fibre blowing | Civil works | Civils coordination | Council permitting | Traffic Management
Drawing | Traffic Management | Splicing | Testing.



Project 2

telent

Kneller Hall (OSA Network)

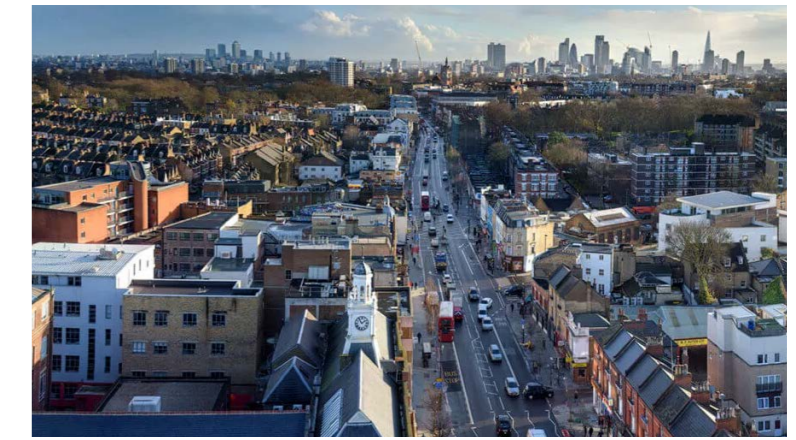
Location: Kneller Hall, Hounslow, London, UK

Building: Network Build Turnkey Solution

Spines: 3 | **PONs:** 109 | **THPs:** 13,387

Scope of Work:

Project Management | Surveying | Roping | TRR |
Subducting | Fibre blowing | Civil works | Civils coordination | Council permitting | Traffic Management
Drawing | Traffic Management | Splicing | Testing.



Project 3

hyperoptic

Holloway HyperZone

Location: Holloway, London, UK

Building: Network Build Turnkey Solution

Spines: 12 | **PONs:** 68 | **THPs:** 53,122

Scope of Work:

Project Management | Surveying | Roping | TRR |
Subducting | Fibre blowing | Civil works | Civils coordination | Council permitting | Traffic Management
Drawing | Traffic Management | Splicing | Testing.



Project 4



Fulham HyperZone

Location: Fulham, London, UK

Building: Network Build Turnkey Solution

PONs: 34 | THPs: 32,788

Scope of Work:

Project Management | Surveying | Roping | TRR | Subducting | Fibre blowing | Civil works | Civils coordination | Council permitting | Traffic Management Drawing | Traffic Management | Splicing | Testing.



Project 5



Islington HyperZone

Location: Islington, London, UK

Building: Network Build Turnkey Solution

Spines: 7 | PONs: 34 | THPs: 45,677

Scope of Work:

Project Management | Surveying | Roping | TRR | Subducting | Fibre blowing | Civil works | Civils coordination | Council permitting | Traffic Management Drawing | Traffic Management | Splicing | Testing.



BAU 1: Telent Civil Engineering
(From 2015)

Areas: Suffolk, Cambridgeshire, & Essex

Civil Tasks Done: **+56,000**

Permits Granted: **+50,000**

Traffic Management Jobs: **+31,000**



BAU 2: Morrison TS Civil Engineering
(From 2019)

Areas: Suffolk, Cambridgeshire, & Essex

Civil Tasks Done: **+20,800**

Permits Granted: **+18,200**

Traffic Management Jobs: **+12,300**



BAU 3: G.Network Civil Engineering

Areas: Suffolk, Cambridgeshire, & Essex

Subducting Street Finalized: **+ 47**



BAU 4: Trooli Civil Engineering
(From 2024)

Areas: Suffolk, Cambridgeshire, & Essex

Civil Tasks: **+ 700**

Permits Granted: **+ 650**

Traffic Management: **+ 300**



SDU
TELECOMS



www.sdutelecoms.com

Safe Dig Utilities LTD 2024 ©

BLACK APPLE
LONDON