



SDU
TELECOMS

Your Trusted Contractor

www.sdutelecoms.com

INDEX

- About us
- Culture & Values
- Services
 - Civil Engineering
 - Streetworks Permitting
 - Traffic Management
 - Fibre Optic Cabling
 - MDU & SDU
 - Splicing
 - Maintenance & Reparations
 - Wayleaves & Additional Services
- Why Us
- Current Customers
- Customer Feedbacks
- Portfolio



“Helping to keep UK connected”

SDU & Telecoms Empowering the UK Telecoms



SDU
TELECOMS

About Us

We excels in offering customized, superior-quality utility construction programs, specifically designed to meet the distinct requirements of the Power and telecommunications sectors. Its steadfast commitment to customer satisfaction, combined with its provision of efficient, safe, and quality-centric services, cements SDU Telecoms as a dependable ally in the UK's civil and telecom infrastructure arena.



Catalin Felecan, the driving force behind Safe Dig Utilities and Telecoms (SDU Telecoms), boasts over 20 years of unparalleled expertise in the telecom industry, with a specialized focus on FTTx fibre technology. Since its inception in 2017, SDU Telecoms, under Felecan's guidance, has rapidly emerged as a leading infrastructure services provider across the UK, celebrated for its dedication to innovation, safety, and quality. Felecan's commitment to surpassing client expectations and his capacity to galvanize a highly skilled team that embodies his principles have been crucial in establishing SDU Telecoms' exceptional standing in the industry.



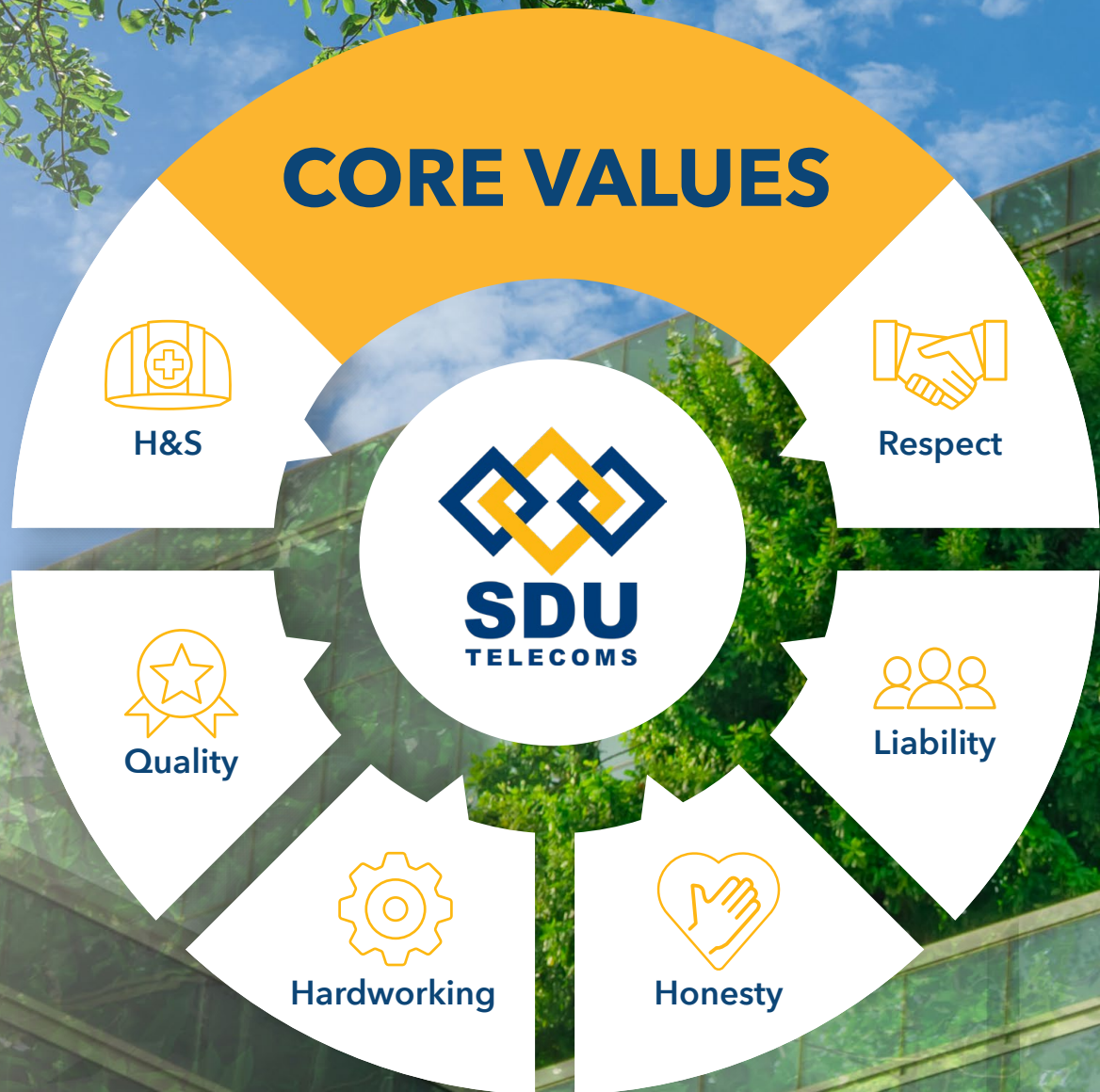
Meet our Team



More About Us

Our success stems from our vibrant workplace culture, where we see ourselves as more than a team...

we're a family!



Women's Day



Employee of the Month



Christmas Day



Pizza Day



Donations



Birthdays



AND MORE...

SERVICES



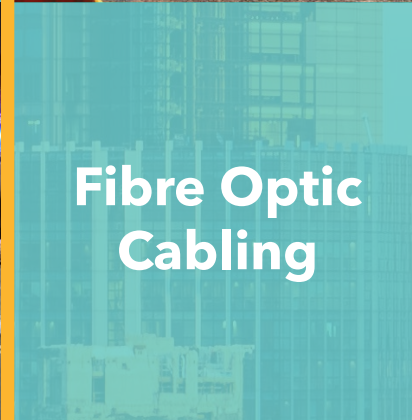
**Civil
Engineering**



**Traffic
Management**



**Streetworks
Perminting**



**Fibre Optic
Cabling**



Splicing





MDU & SDU



Maintenance



Wayleaves



Call Outs



**Additional
Services**





Civil Engineering

We are experts on...

- Telecoms Infrastructure
- Power Infrastructure
- PIA
- Moling
- Pole Installation
- EV Charges



Telecoms Infrastructure

Lead the way in telecommunications with our specialized Telecom Infrastructure Civil Engineering services, where expertise meets efficiency.



Locating and Clearing
Duct Blockages



Duct Laying



Frame & Covers



Directional Drilling



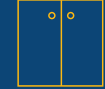
Trenching



Service Box &
Vault Placement



Conduit Placement
& Proofing



Cabinets Installation



Pole Setting
& Support Structures



Manhole



Slewing



Tarmac & Reinstatement





Power Infrastructure

ACCREDITED



NERS
NATIONAL
ELECTRICITY
REGISTRATION
SCHEME



Fuel growth with us, your partners in Civil Engineering offering tailored solutions for robust energy infrastructure.



Locating and Clearing
Duct Blockages



Duct laying



Frame & Covers



Directional Drilling



Trenching



Service Box &
Vault Placement



Conduit Placement
& Proofing



Cabinets Installation



Pole Setting
& Support Structures



Manhole



Handholes



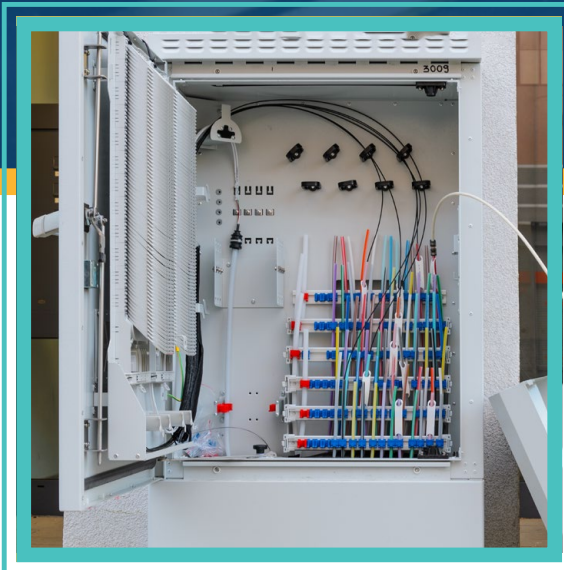
Pull Boxes

EV CHARGES

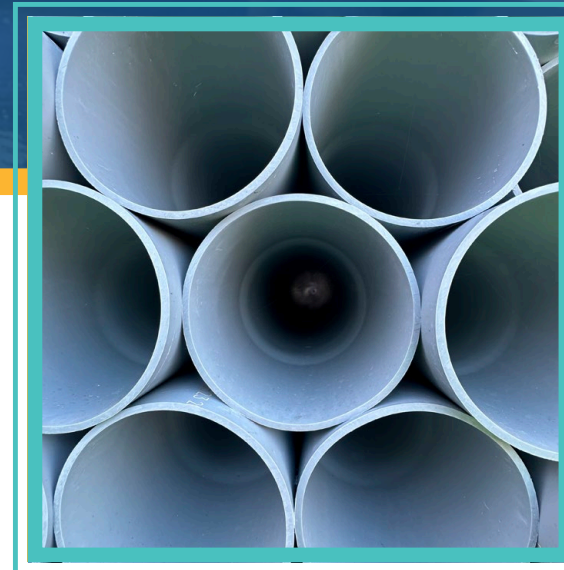




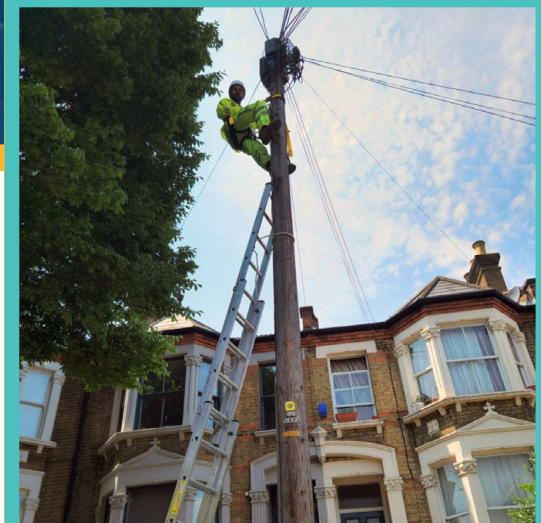
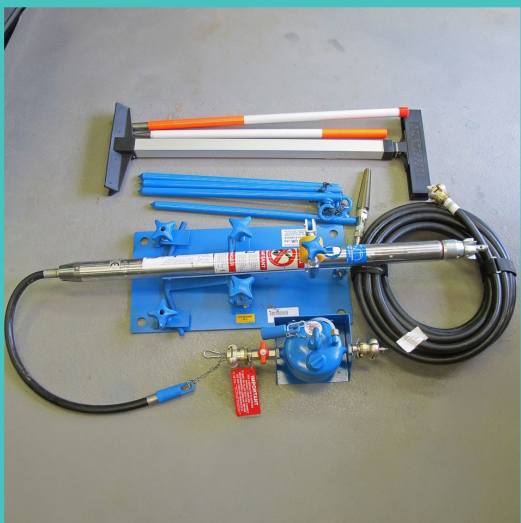
PIA Installation and Testing



Moling



Pole Installation



WHY US?

We are more than a supplier,
We are experts!

We can build **over 600 jobs per week!**

Qualified
Team

+350,000

Task Done



+200,000m

Meters Digged



PARTNER SKILLS



**Building
Safe**

Effective

Quick

**Higher
Quality**

+180,000
Blockages Cleared

+80,000
Frames & Cover

+20,000
Tarmac Jobs



Streetworks Permitting

We are experts on...



Streetworks
Permit Application



Bus suspension



Lane closure



Switch outs



Land Searches



Highways Permits



Temporary road closures



Complex street closures



Parking bay suspension



Emergency or urgent works



Defect Management



Remedial Coordination



Re-activation of issuing
a road closure



Re-activation of
an existing permit



Amend an existing
Traffic Regulation Order



Arrange re-advertising of
a Traffic Regulation

WHY US?

Traffic Management Plans
& Setup Availability



Street Work
Manager experts



Highly Experienced

Capability
+700
Permits/week

Experience
+290k
Permits Granted



**High volume
of applications**

**Quick &
Effective**



**Specialized Software of
Management & Reporting**

A photograph of several red and white traffic cones on a road. The background is blurred, showing a road and some greenery. A dark blue banner is overlaid on the bottom left of the image.

Traffic Management

We are experts on...



2 way or Multi Phase
Temporary Traffic Lights



Pedestrian
Phase Signals



Stop & Go Remote or
Operative Controlled



Signs, Barriers, Cones...
Any Chapter 8 Requirements



Lane Closures



Road Closure / Diversions



Convoy Operations /
Contra Flows



Priority Systems



Design consultation



Traffic Management
CAD Drawings



Sign Shop (Advanced
Warning Signs / Specials)



VMS
(Variable Message Signs)

WHY CHOOSE US FOR TM



+9 Years Experience

+15,000 CAD Drawings

+15,000 Sites Set up

+1,800 Road Closed

+60 CAD Drawings / week



3 Reasons to Choose us:

Management of High Volume!

Fast Response!

Premium Services!

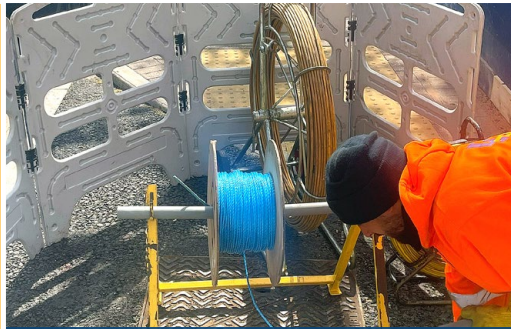


Fibre Optic Cabling

We are experts on...



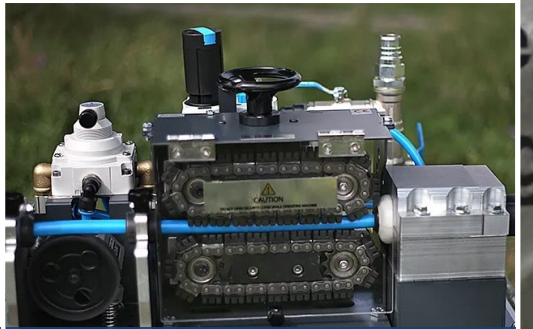
Surveying



Roping



Subducting



Blowing



Cabling



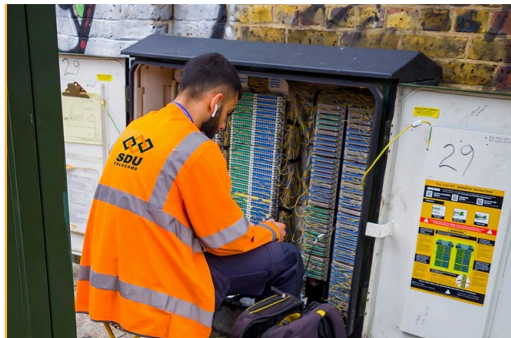
Labelling



Overhead



Physical Infrastructure Access (PIA)



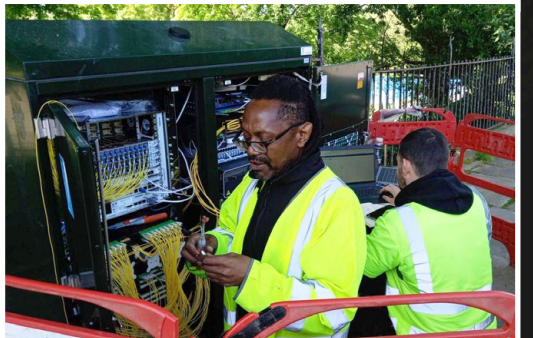
Last mile installation



Customer installation



OTDR Testing



Cabinet installation

Capability



271,000
THPs per month



20

PON & Spines build
per month

12

Turn Key Projects
on Parallel



Experience



+200,000
THPs Delivered

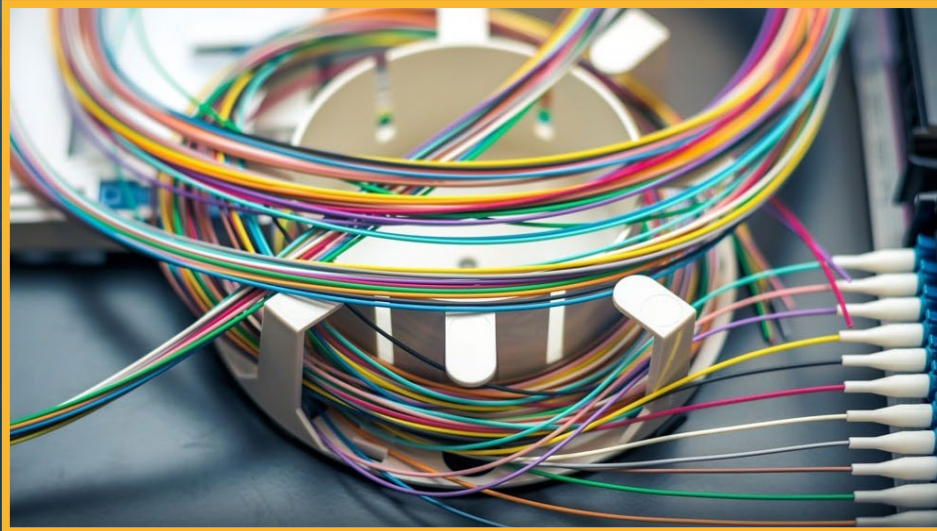
335,000
Civils Done



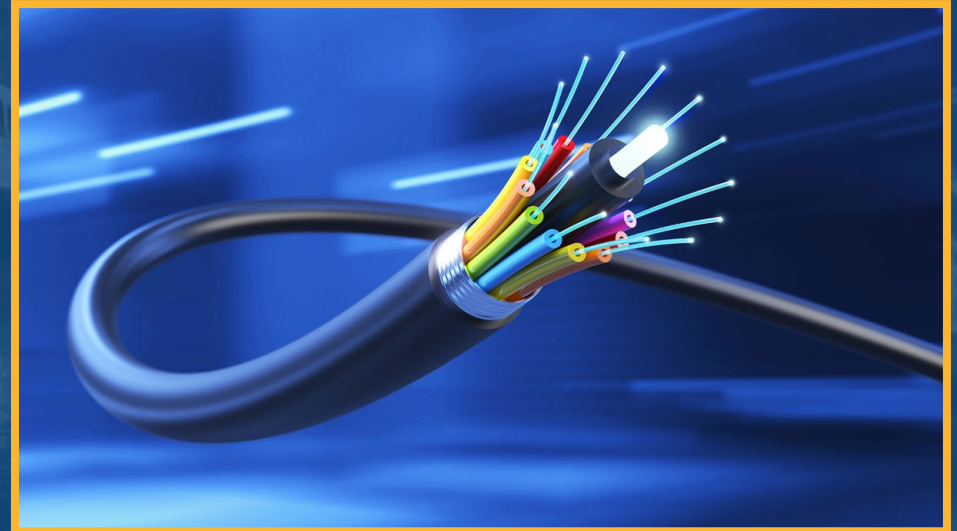
275
PONS & Spines Build

WHY US?

Because we are using **the best Technology**



Ribbon Fibre



Cof Fibre



Working Safe



Qualified Team



PARTNER SKILLS

 **monday.com**

 **Trello**

 **iAuditor**
by SafetyCulture

 **Project**

 **depotnet**
software - ready for service

 **FireWire**

 **SafeContractor**
Alcumus

 **Jira Software**

 **Office 365**

 **SUMITOMO ELECTRIC**

FLUKE®

Higher Quality



Effective



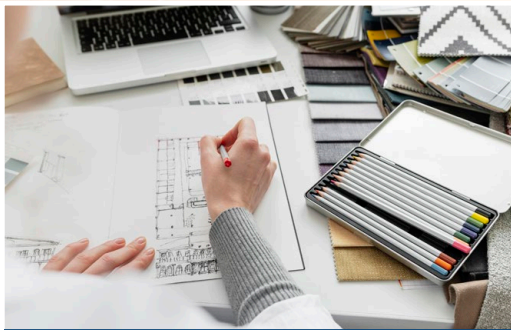
Quick



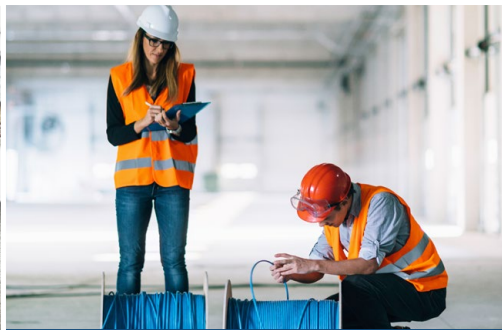
MDU & SDU

Connecting individual or multiple residential and business units can present a significant challenge. With us, you don't need to worry about the how—because that's exactly what we're here for.

Services we offer:



Planning, Design & Surveying



Retro Builds & New builds



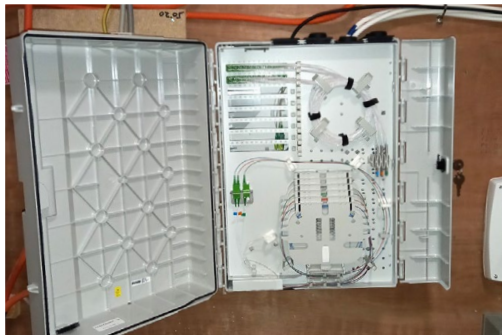
Resident Schedule installation & communication



Testing



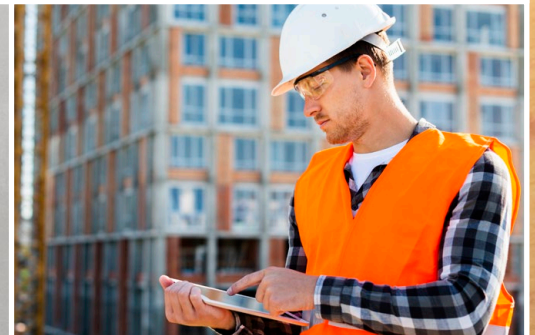
External Installations



Cabinets & FDPs



Fire Stopping Surveying, Sealing & Certification



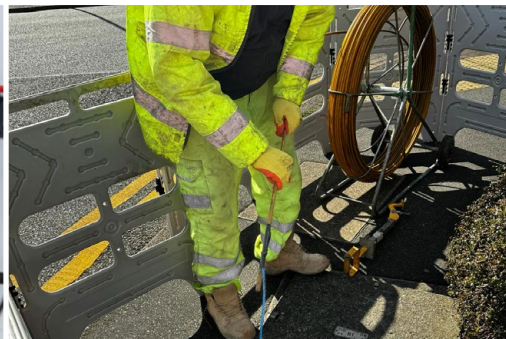
Asbestos Surveying



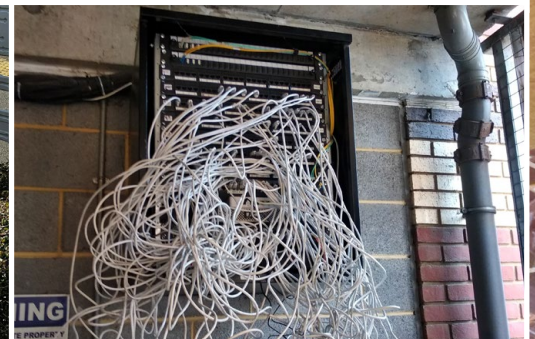
Containments Installation



PIA



TRR



Call Outs & Maintenance

EXPERTS ON...



InvisiLight Fibre

FTTP & FTTH

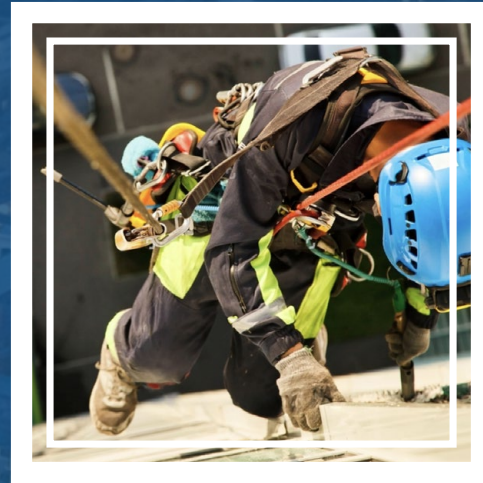
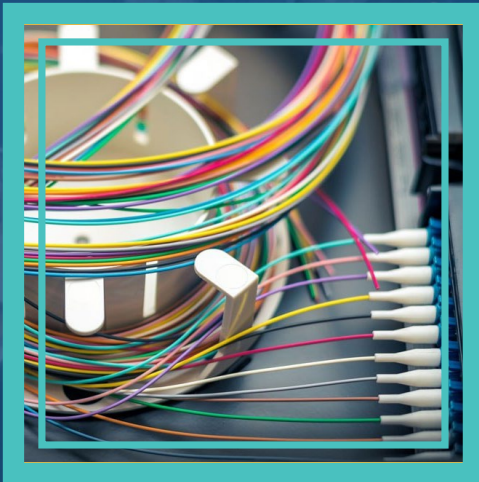


GPon Fibre

OUR EXPERIENCE MAKES THE DIFFERENCE!

LET'S US DESIGN IT, WE WILL FIND THE BEST ROUTES

Ribbon Fibre



**Externals & Installations
at height**

Cat 5 & 6 Networks

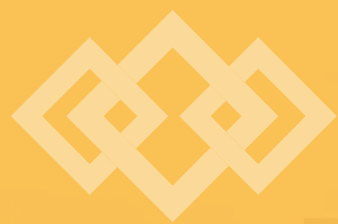


ALSO BRILLIANT INSTALLING...

- Hatches
- Galv Steel Tray
- Galv trunking
- PVC trunking
- Catenary Wire
- Overhead
- Solid UPVC conduit
- Flexible UPVC and UPVC coated steel conduit
- Cabinets deployment
- Installing equipment into DP



WE CERTIFICATE OUR FIRE STOPPING INSTALLATIONS





SDU What we do

- ✓ Creating a pathway for the ducting system into the house
- ✓ Blowing Fibre from cabinet to the premises
- ✓ Splicing & Jointing the fibre
- ✓ Indoor installation of ONT at the customer premises
- ✓ Provisioning the customer onto the UFB network



+ We prepare the Pathway for Fibre Installation

Trenching | Thrusting | Grass reinstatement | Concrete reinstatement | Asphalt reinstatement | Right Of Way (ROW)

Fibre Installation Methods



Aerial cable

Underground pipe



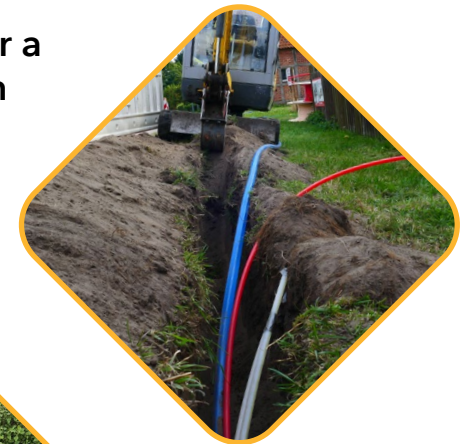
Mounted on a fence, driveway edge, or retaining wall



Buried cable under a driveway or path



Buried cable in a grass verge or garden



WHY US?

We offer a **Turnkey Solution** with a high volumen delivery capability



+20 Years Experience



+7,500 THP Design

Effective

Quick

Higher Quality

Safe



+5,000 THP Build/Month



LET US MAKE YOUR PROJECTS MORE EFFICIENTLY



n/Month

Qualified Team

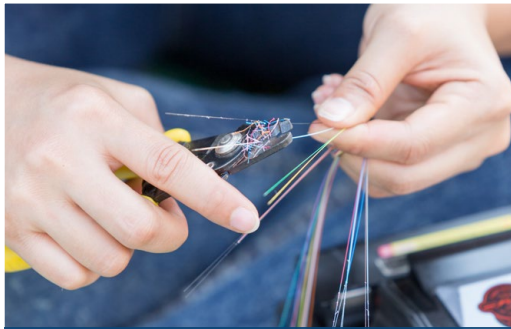
PARTNER SKILLS



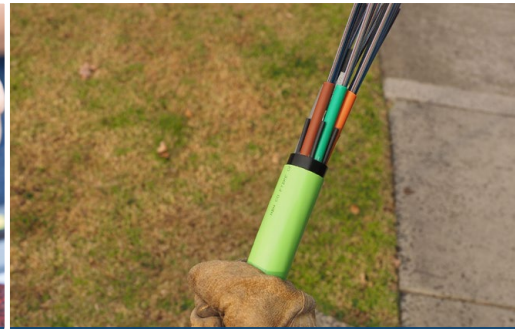


Fibre Fusion Splicing & Testing Services

We are experts on...



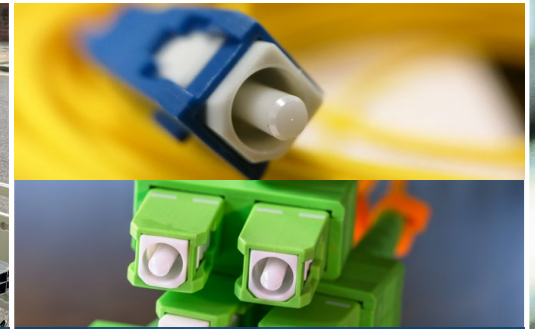
Single Fusion Splicing



Ribbon Fusion Splicing



Nodes & Clusters Integration



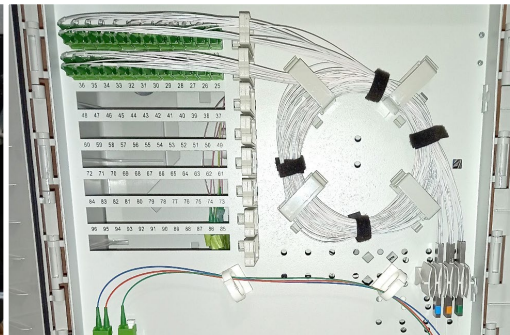
Single-Mode & Multi-Mode



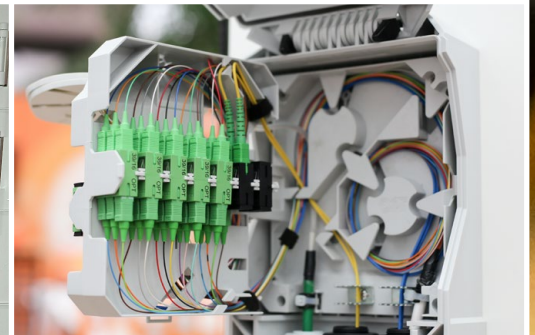
Point Of Enter (POE) Splicing



OLT Connection Splicing



Optical Splitter Splicing



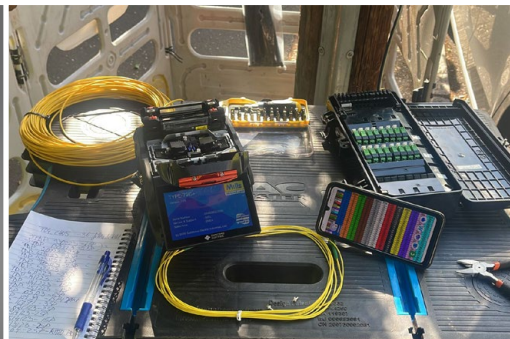
Splice Box Integration



Pole splicing



Network Repairs
& Extensions



Network Redesign
& Reconfigurations



Fiber Optic Testing
& Troubleshooting

WHY CHOOSE OUR SERVICES?



01

Expertise

Our team consists of skilled professionals with certifications and extensive experience in the most advanced fibre optic splicing techniques, guaranteeing superior network performance.

02

Precision

We recognize the critical impact of even minor flaws on your network's functionality. Our meticulous approach to splicing guarantees accuracy in every job.

PARTNER



+15 Dedicated Teams

+20,000 Month Delivery

+300,000 Splice Delivered

+1,000,000 Tested

03

Advanced Technology

Our commitment to excellence is reflected in our investment in the latest fiber optic splicing tools and technology, ensuring top-tier results for your network

04

Dependability

Rely on us for consistent, high-quality fiber optic splicing that enhances signal integrity and optimizes the efficiency of data transmission.

05

Tailored Solutions

Recognizing the distinctiveness of each project, we customize our services to address your particular requirements, from minor repairs to extensive installations.

R SKILLS





Maintenance & Call Outs

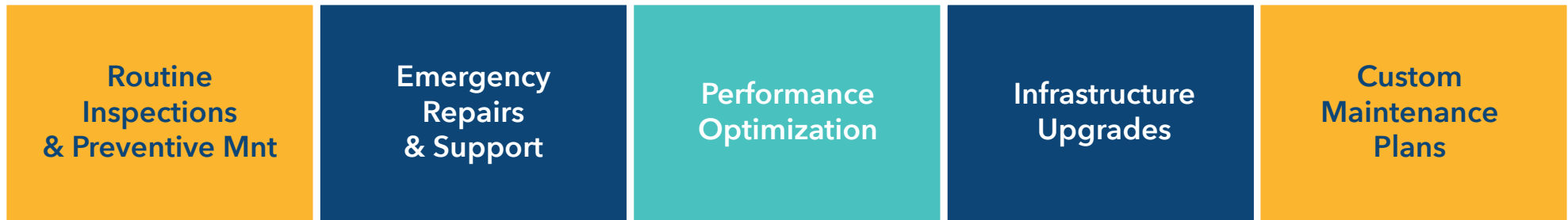


Maintenance

SDU Telecoms "Ensuring Reliability and Performance Through Expert Maintenance"

At SDU Telecoms, we understand that the backbone of effective telecommunications and power infrastructure lies not just in cutting-edge installations but in diligent, ongoing maintenance. Our dedicated maintenance services are designed to ensure your infrastructure remains reliable, efficient, and optimized for performance.

Maintenance Services:



Why Choose SDU Telecoms for Maintenance?

01 Expertise and Experience

02 Comprehensive Service Coverage

03 Commitment to Safety & Quality

04 State-of-the-Art Tools & Techniques

24H Call Outs

Restoring Your Infrastructure to Peak Performance

In the dynamic realm of telecom and power infrastructure, the unexpected can happen. Our services are designed to quickly address damages, ensuring minimal downtime and restoring the integrity of your network with lasting solutions.

Reparation Services:



Why Choose SDU Telecoms for Call Outs?

- ★ Experienced Professionals
- ★ Advanced Technologies
- ★ Swift & Effective
- ★ Customised Solutions
- ★ Dedicated to Quality

A photograph of two men in business suits shaking hands. The man on the right is smiling broadly, showing his teeth. The man on the left is seen from the back, also in a suit. The background is a bright, out-of-focus office setting with vertical window frames.

Wayleaves & Other services



Wayleaves

Navigating the complexities of wayleaves is crucial for the successful deployment and maintenance of telecom and power infrastructure. Our expertise in securing wayleave agreements enables timely project delivery by ensuring access rights and permissions are correctly established and maintained.

Wayleaves Services:

- Negotiation and Agreement Acquisition
- Documentation and Legal Support
- Stakeholder Liaison
- Compliance and Regulation Advisory
- Project Management and Coordination

Why SDU Telecoms?

- Expert Negotiation Skills
- Legal & Regulatory Knowledge
- Strong Stakeholder Relationships
- Attention to Compliance and Detail
- Efficient Project Execution

Other Services

At SDU Telecoms, we understand the complexities and challenges of telecom and power infrastructure projects. Beyond our core services, we offer a suite of additional services designed to cover every aspect of project management, consultancy, and planning. From the initial survey to the final closure of notice actions, our team is equipped to support your project's success at every step.

Other Services:

Project
Management

Consultancy

Survey
& Planification

WHY SDU TELECOMS

Certifications

Spaces

Teams

Backoffice

Vehicles

Team Compliance

Partners Skills

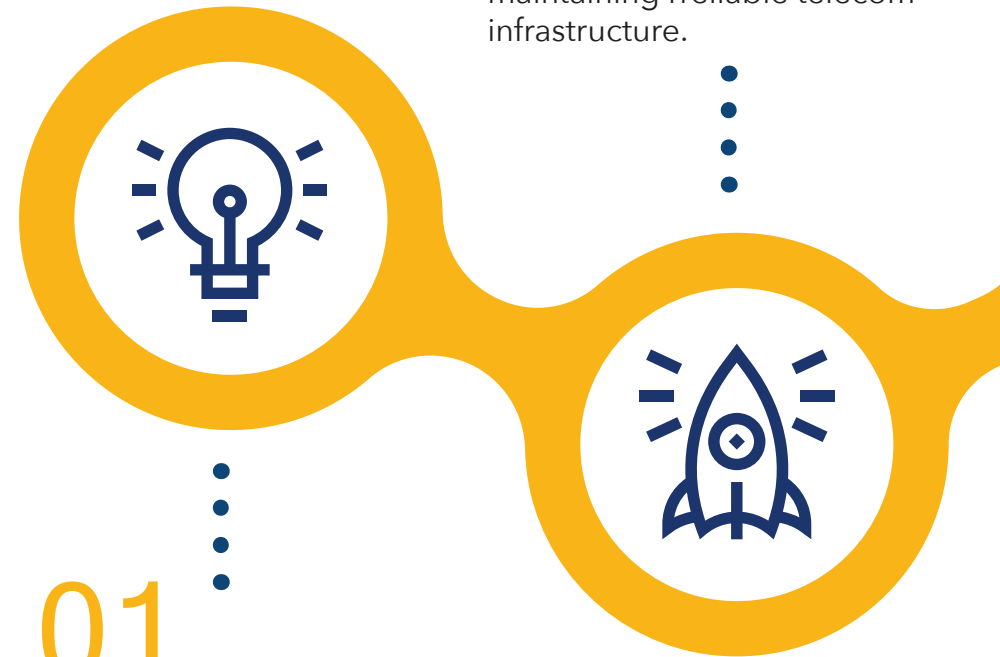


Why Choose Us?

02

EXPERTISE

We are an established company with a skilled team with extensive experience in building and maintaining reliable telecom infrastructure.



01

STRONG SAFETY AND COMPLIANCE

Our commitment to safety and adherence to industry standards and regulations ensures a secure working environment, reducing risks and potential liabilities.

04

CUSTOMER-CENTRIC APPROACH

We put the customer at the heart of our business, tailoring solutions to meet specific needs and providing ongoing support to ensure seamless communication and satisfaction.



06

COMPETITIVE PRICING

SDU TELECOMS offers cost-effective services without compromising on quality, delivering value for money and fostering long-term partnerships with clients.



03

TIMELY PROJECT COMPLETION

We prioritize meeting deadlines, ensuring smooth project execution and minimal disruptions to clients' operations, leading to increased customer satisfaction.



05

COMMITMENT TO EXCELLENCE

As your telecom infrastructure contractor, I am dedicated to upholding the highest quality standards in the industry. I employ rigorous quality control measures and utilize only the finest materials and components, ensuring reliable and high-performance networks for your organisation.



THE HEADQUARTERS



500m²



90 Desks



30 Parking Spaces



3 Meeting Rooms



Train Station
(Chafford Hundred)



Facilities

Upside Down
House - Lakeside



Tesco Express

Fleming Rd

Fleming Rd

Saffron Rd

Chafford Hundred





Traffic Management Illustrator

| StreetWorks Coordinators

| Administration Coordinators

NICE PLACE TO WORK



Project Manager

Delivery Managers

H&S & Supervisors





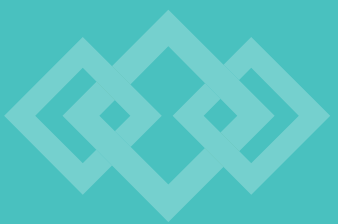
HUNTS HILL FARM



Avalon Rd

Avalon Rd

Mary Rd



THE YARD ON THE NORTH



25000m²



24/7 Security



CCTV



M25 Access

THE YARD ON THE SOUTH



5000 *m2*



24/7 *Security*



CCTV



M25 *Access*



AMPLE AMOUNT OF STORAGE



25.000m² Storage

| CCTV and Insured



Fully TRR equipment

Blowing Machines

Splicers Machines

Traffic Management



+60 Teams



Digging Teams



TRR (cabling)



Fibre blowing



Splicer Teams



+70 Vehicles



Grab Lorries



Mini Diggers



Cherry Picker



JCB Vehicles



Hot Box Vehicles



Support Vehicles



CERTIFICATIONS

Operative Acreditations



All Operatives

Safe Dig Utilities Induction | MT003 | SA006 | Smart Awards



Overhead Cabeling

SA001 (Overhead Safety) | S8 (Overhead Cable Installation)



Underground Cabeling

SA002 (Underground Safety) | PIA S7 (Duct And Cable Installation) | SA010 (Medium Risk Confined Spaces)



Civil operatives

Street Works | Duct Laying (Openreach) | Duct Blockages (Openreach) | Frame And Covers (Openreach) | Box Building (Openreach)
Core Drilling (Openreach) | SA004 (Abrasive Wheels) | SA007 (Asbestos Awareness) | SA010 (Medium Risk Confined Spaces) | PIA S7 (Duct And Cable Installation)

Partner Skills

Solo (Telent) | Optimus (MorrisonTS) | Zsmart (Hyperoptic) | Street manager apps | Council Portals | and much more...





Current Customers

"Your success is our priority"
(Catalin Felecan)

telent



MORRISON 
Telecom Services
A part of **MGroup**Services

G.Network
100% FIBRE CONNECTIVITY


trooli

ELECTRICAL
TESTING

CUSTOMER FEEDBACKS

"I have worked with SDU on multiple projects and their attention to detail and commitment to delivering high-quality work has always impressed me. Their team is knowledgeable and professional, and they are always willing to go the extra mile to ensure that projects are completed on time and to a high standard."

Project Manager at Hyperoptic



"SDU has been a valuable partner in our telecommunications infrastructure projects. Their experience and expertise in civil and permitting services have been instrumental in the success of our projects. Their team is responsive and reliable, and they always prioritize safety and compliance with regulations."

Construction Manager at Telent



"SDU has been an important subcontractor in our efforts to provide full-fibre broadband to residents and businesses across London. Their dedication to quality and safety is evident in their work, and their team is knowledgeable and efficient. We have been impressed with their services and look forward to continuing to work with them."

Head of Operations at G.Network



"SDU has been an integral part of our civil work on multiple projects. Their team is knowledgeable and experienced, and they always prioritize safety and compliance with regulations. We have been impressed with their ability to quickly adapt to project changes and their commitment to delivering high-quality work."

Delivery Manager at Hyperoptic



"SDU has consistently delivered high-quality work in a timely manner, and their team is always willing to collaborate to ensure successful project completion."

**Director of Operations
at Morrison Telecom Services**



"SDU Telecoms demonstrated exceptional capability and project management, completing a significant volume of work in a remarkably short time. Their commitment to quality and efficiency is evident, ensuring a reliable connection and seamless service."

Delivery Director at Trooli



SDUhero



SDU
TELECOMS

Portfolio



Project 1



HyperZone: Peckham & Surrey Quays

Location: Peckham & Surrey Quays, London, UK

Building: Network Build Turnkey Solution

Spines: 5 | **PONs:** 52 | **THPs:** 38,365

Scope of Work:

Project Management | Surveying | Roping | TRR |
Subducting | Fibre blowing | Civil works | Civils coordination | Council permitting | Traffic Management
Drawing | Traffic Management | Splicing | Testing.



Project 2 **telent**

Kneller Hall (OSA Network)

Location: Kneller Hall, Hounslow, London, UK

Building: Network Build Turnkey Solution

Spines: 3 | **PONs:** 109 | **THPs:** 13,387

Scope of Work:

Project Management | Surveying | Roping | TRR | Subducting | Fibre blowing | Civil works | Civils coordination | Council permitting | Traffic Management Drawing | Traffic Management | Splicing | Testing.



Project 3 **hyperoptic**

Holloway HyperZone

Location: Holloway, London, UK

Building: Network Build Turnkey Solution

Spines: 12 | **PONs:** 68 | **THPs:** 53,122

Scope of Work:

Project Management | Surveying | Roping | TRR | Subducting | Fibre blowing | Civil works | Civils coordination | Council permitting | Traffic Management Drawing | Traffic Management | Splicing | Testing.



Project 4



Fulham HyperZone

Location: Fulham, London, UK

Building: Network Build Turnkey Solution

PONs: 34 | **THPs:** 32,788

Scope of Work:

Project Management | Surveying | Roping | TRR | Subducting | Fibre blowing | Civil works | Civils coordination | Council permitting | Traffic Management Drawing | Traffic Management | Splicing | Testing.



Project 5



Islington HyperZone

Location: Islington, London, UK

Building: Network Build Turnkey Solution

Spines: 7 | **PONs:** 34 | **THPs:** 45,677

Scope of Work:

Project Management | Surveying | Roping | TRR | Subducting | Fibre blowing | Civil works | Civils coordination | Council permitting | Traffic Management Drawing | Traffic Management | Splicing | Testing.

The logo for telent, featuring the word "telent" in a bold, lowercase, sans-serif font. The letters "t", "e", and "l" are black, while the "e" and "n" are white and set against a purple rectangular background. The logo is framed by two horizontal purple bars, one above and one below.

BAU 1: Telent Civil Engineering
(From 2015)

Areas: **Suffolk, Cambridgeshire, & Essex**

Civil Tasks Done: **+56,000**

Permits Granted: **+50,000**

Traffic Management Jobs: **+31,000**

The logo for MORRISON Telecom Services. "MORRISON" is in a bold, black, uppercase font. To its right is a red stylized "M" icon. Below "MORRISON" is "Telecom Services" in a black, sans-serif font. Underneath that, in a smaller font, is "A part of MGroupServices". A thin red line is positioned above the text "A part of MGroupServices".

BAU 2: Morrison TS Civil Engineering
(From 2019)

Areas: **Suffolk, Cambridgeshire, & Essex**

Civil Tasks Done: **+20,800**

Permits Granted: **+18,200**

Traffic Management Jobs: **+12,300**

The logo for G.Network. "G.Network" is in a bold, black, sans-serif font. Below it, "100% FIBRE CONNECTIVITY" is written in a smaller, blue, uppercase, sans-serif font.

BAU 3: G.Network Civil Engineering

Areas: **Suffolk, Cambridgeshire, & Essex**

Subducting Street Finalized: **+ 47**

The logo for trooli. The word "trooli" is in a bold, lowercase, sans-serif font. A yellow swoosh is positioned above the "o" and "l".

BAU 4: Trooli Civil Engineering
(From 2024)

Areas: **Suffolk, Cambridgeshire, & Essex**

Civil Tasks: **+ 700**

Permits Granted: **+ 650**

Traffic Management: **+ 300**



SDU
TELECOMS



www.sdutelecoms.com

Safe Dig Utilities LTD 2024 ©

BLACK APPLE
LONDON